

Evington Valley Primary School



SAFEGUARDING & CHILD PROTECTION POLICY AND GUIDELINES 2017/2018

Safeguarding is defined as protecting children from maltreatment, preventing impairment of health and/or development, ensuring that children grow up in the provision of safe and effective care and taking action to enable all children to have the best life chances.

| | | | |
|------------------------------------|----------------|---------------------|----------|
| Policy Date: | September 2017 | Version: 1.2 | |
| Policy Review Date: | September 2018 | Jill Griffin | 16.11.17 |
| Ratified by Governing Body: | | | |
| Hameeda Sidat | | | 16.11.17 |

Contents Page

| | |
|---|----|
| Introduction | 2 |
| Overall Aims | 3 |
| Key Processes | 4 |
| Expectations; | 4 |
| Staff | |
| Visitors | |
| Statement for Parents/Carers | |
| Extended School Activities | 5 |
| Procedures | 5 |
| Responsibilities; | 6 |
| Designated Safeguarding Lead | 6 |
| Headteacher | 7 |
| Governing Body | 8 |
| Supporting Children | 9 |
| Confidentiality | 9 |
| Supporting Staff | 10 |
| Allegations Against Staff | 10 |
| Whistleblowing | 11 |
| Preventing abuse | 11 |
| Policy Specifics; | 12 |
| Safeguarding students vulnerable to Extremism | 12 |
| Child Sexual Exploitation (CSE) & Trafficking | 13 |
| Grooming & Sexting | 14 |
| Peer on Peer Abuse/Children Using Abusive Behaviours (CUAB) | 14 |
| Domestic Violence & Abuse including Domestic Violence in Teen Relationships | 15 |
| Child Missing From Education | 16 |
| Female Genital Mutilation (FGM) | 17 |
| Forced Marriage/Honour Based Violence | 17 |
| Abuse linked to Faith, Beliefs and Culture | 18 |
| Early Help | 19 |
| Bullying and Safeguarding/The Law | 19 |
| Private Fostering | 20 |
| What to do when we are concerned | 20 |
| Policy Review | 21 |
| Other relevant policies within school | 21 |
| Useful Contacts | 22 |
| Appendix 1 - Definition & Indicators of Abuse | 23 |
| Appendix 2 - Procedures; If you're concerned about a child | 28 |
| Appendix 3 - Procedures; Allegations against a staff member | 30 |
| Appendix 4 - Procedures; Avoiding allegations of abuse for Staff/Volunteer | 31 |
| Appendix 5 - Indicators of vulnerability to radicalisation | 32 |
| Appendix 6 - Procedures; Whistleblowing | 34 |

1 Introduction

1.1 Evington Valley fully recognises the contribution it can make to protect children and support pupils in school. The pupil's best interest and welfare is of paramount importance. The aim of this policy is to safeguard and promote our pupil's welfare, safety and health by fostering an honest, open, caring and supportive climate and our staff members working with pupils maintain an attitude of 'it could happen here' where safeguarding is concerned. This policy sets out how the school and the governing body discharges its statutory responsibilities relating to safeguarding and promoting the welfare of children who are pupils at the school.

Safeguarding is defined as:

- Protecting children from maltreatment;
- Preventing impairment of children's health or development;
- Ensuring that children are growing up in circumstances consistent with the provision of safe and effective care; and
- Taking action to enable all children to have the best life chances.

1.2 Evington Valley is committed to safeguarding and promoting the welfare of all its students and. We believe that:

- All children/young people have the right to be protected from harm &
- Children/young people need to be safe and to feel safe in school;
- This means our staff consider, at all times, what is in the best interest of the children/ young people
- Children/young people need support which matches their individual needs, including those who may have experienced abuse;
- All children/young people have the right to speak freely and voice their values and beliefs;
- All children/young people must be encouraged to respect each other's values and support each other;
- All children/young people have the right to be supported to meet their emotional, and social needs as well as their educational needs – a happy healthy sociable child/young person will achieve better educationally;
- The staff within our school are prepared to identify children and young people who may benefit from Early Help intervention
- Schools can and do contribute to the prevention of abuse, victimisation, bullying, exploitation, extreme behaviours, discriminatory views and risk taking behaviours; and
- All staff and visitors have an important role to play in safeguarding children and protecting them from abuse.

1.3 Evington Valley will fulfil local and national responsibilities and accepted best practice as laid out in the following documents:-

- Working Together to Safeguard Children (DfE March 2015)
- Keeping Children Safe in Education: Statutory guidance for schools and colleges (DfE Sept 2016)
- The School Staffing (England) Regulations 2009 & Amended Regulations 2015; Safer Recruitment in Education including, Page 22 Keeping Children Safe in Education September 2016
- Guidance for Safer Working Practice 2009 & 2015 - (Safer Recruitment consortium)
- Prevent Duty 2015
- **Information sharing:** Advice for Practitioners providing safeguarding services to children, young people parents and carers. (March 2015)
- 'What To Do If You Are Worried A Child Is Being Abused' March 2015
- Leicester Safeguarding Children's Board Procedures (LSCB)
<http://llrscb.proceduresonline.com/chapters/contents.html>

- The Children Act 1989 and 2004
- The Education Act 2002 s175/s157
- Mental Health and Behaviour in Schools: Departmental Advice (DfE 2014)
- Framework for the Assessment of Children in Need and their Families 2000
- Sexual Offences Act 2003 (Position of Trust offence)
- Childcare (Disqualification) regulations 2009
- Counter Terrorism and Security Act 2015
- Female Genital mutilation Act 2003
- Safeguarding & Child Protection education procedures in Leicester, notes, information, and training for Designated Safeguarding Leads (DSL) in schools
- Children and Families Act 2014
- Safeguarding and Vulnerable Group Act 2006

1.4 The Governing Body takes seriously its responsibility under section 175 of the Education Act 2002 to safeguard and promote the welfare of children; and to work together with other agencies to ensure adequate arrangements within our school to identify, assess, and support those children who are suffering harm.

1.5 We recognise that all staff and governors have a full and active part to play in protecting our pupils from harm, and that the child's welfare is our paramount concern.

1.6 All staff¹ believe that our school should provide a caring, positive, safe and stimulating environment that promotes the social, physical and moral development of the individual child.

2 Overall Aims

- This policy will contribute to safeguarding our students and promoting their welfare by supporting the child's development in ways that will foster security, confidence and resilience at the same time considering the best interest of the child.
- Providing an environment in which children and young people feel safe, secure, valued and respected, feel confident and know how to approach adults if they are in difficulties
- Raising the awareness of all teaching and non-teaching staff of the need to safeguard children and of their responsibilities in identifying and reporting possible cases of abuse.
- Providing a systematic means of monitoring children known or thought to be at risk of harm, and ensure we, the school, contribute to assessments of need and support plans for those children including Child Missing from Education.
- Acknowledging the need for effective and appropriate communication between all members of staff in relation to safeguarding pupils.
- Developing a structured procedure within the school which will be followed by all members of the school community in cases of suspected abuse.
- Developing effective working relationships with all other agencies involved in safeguarding children including Early Help and intervention
- Work within the curriculum raising awareness of and promoting safeguarding, on and off line, to our children/young people.
- Ensuring that all adults within our school who have access to children have been checked as to their suitability. This includes other community users of our facilities.

¹ 'Staff' covers ALL adult staff on site, including temporary, supply and ancillary staff, and volunteers working with children

3 Key processes

Our school procedures for safeguarding children are in line with the *Leicester City Safeguarding Children's Board (LSCB), Multi Agency Child Protection/Safeguarding Procedures;* <http://llrscb.proceduresonline.com/chapters/contents.html>), in addition to the statutory requirements as outlined in 1.3.

4 Expectations

4.1 All staff and visitors will be familiar with this safeguarding policy;

- Staff will have access to, a copy of, and be well versed in our Child Protection Policy; which will also form part of their induction and revisited annually through Whole School Safeguarding Training.
- Be subject to Safer Recruitment processes and checks, whether they are new staff, supply staff, contractors, volunteers etc;
- For those regular external visitors/providers such as cleaners and caterers; to have shown the school a copy of their H & S and Child Protection Guidelines as best practice and where applicable; and that the school has a statement in main reception notifying external visitors who the Schools DSL is and what to do if they have any concerns about a child's welfare
- Be involved in the implementation of individual education programmes, integrated support plans, child in need plans and interagency child protection plans;
- Be alert to signs and indicators of possible abuse (See Appendix 1)
- Record concerns/disclosures and give the record to the DSL; and
- Deal with a disclosure of abuse from a child in line with our school procedures; informing the DSL immediately, and provide a written account as soon as possible. This includes making the appropriate contact with children's social care (DSL).
- Record safeguarding information using school procedures whether electronic (CPOMS) or in paper form

4.2 All parents will be familiar with this safeguarding policy;

- Parents/Cares will have access to the Child Protection Policy as part of initial information given to perspective/existing Parents/Carers and will be available through our schools website. Additional copies will be issued as and when required including notifying parents of changes within the document ie revised annual policy.

4.3 Communicating with parents:

In addition to section 4.2 above, the following statement is provided and highlighted to parents so they are aware of the school's responsibilities:

'The school ensures children learn in a safe, caring and enriching environment. Children are taught how to keep themselves safe, on and off line, to develop positive and healthy relationships and how to avoid situations where they might be at risk including by being exploited.'

The school has a statutory responsibility to share any concerns it might have about a child in need of protection with other agencies and in particular police, health and children's services. Schools are not able to investigate concerns but have a legal duty to refer them. In most instances, the school will be able to inform the parents/carer of its need to make a referral. However, sometimes the school is advised by Children's Social Care or police that the parent/carer cannot be informed whilst they investigate the matter. We understand the anxiety parents/carers understandably feel when they are not told about any concerns from the outset. The school follows legislation that aims to act in the best interests of the child.

5 Extended school and before and after school activities

5.1 Where the governing body provides services or activities directly under the supervision or management of school staff, the school's arrangements for child protection will apply.

5.2 Where services or activities are provided separately by another body, the governing body should seek assurance in writing that the body concerned has appropriate policies and procedures in place to safeguard and protect children and there are arrangements to liaise with the school on these matters where appropriate

6 Procedures

6.1 Evington Valley will ensure that:

- The governing body understands and fulfils its safeguarding responsibilities.
- We have a Designated Safeguarding Lead and a Deputy Designated Safeguarding Lead for child protection and safeguarding, who have undertaken DSL training delivered by Safeguarding in Education, Leicester City Council; of which their training will be refreshed every two years.
- All members of staff are provided with opportunities **annually** to receive Safeguarding Training by the Safeguarding in Education team in order to develop their understanding of safeguarding and child protection in particular the signs and indicators of abuse.
- All members of staff, volunteers, and governors know how to respond to a pupil who discloses abuse, and the procedure to be followed in appropriately sharing a concern of possible abuse or a disclosure of abuse.
- All parents/carers are made aware of the school's responsibilities in regard to child protection procedures through publication of the school's Safeguarding and Child Protection Policy, and reference to it in our prospectus/brochure and home school agreement.
- Our lettings policy will seek to ensure the suitability of adults working with children on school sites at any time.
- Community users organising activities for children are aware of and understand the need for compliance with the school's child protection guidelines and procedures.
- Our recruitment and selection policy includes all appropriate checks on staff suitability including Disclosure and Barring Service checks (formerly Criminal Records Bureau checks²) and that a minimum of two individuals have completed Safer Recruitment Training, provided by Leicester City Council, HR Department, (i.e. Headteacher and a nominated Governor).
- The name of any member of staff considered not suitable to work with children will be notified to either the Disclosure and Barring Service or the relevant Government Department/Agency (where appropriate), depending on the nature of the concern, with the advice and support of the Local Authority Designated Officer (LADO), and that a member of our SLT has attended LADO training (Managing allegations against staff members)
- Our procedures will be annually reviewed and up-dated and ratified by the Governing Body.
- The name of the Designated Safeguarding Lead and Deputy Designated Safeguarding Lead will be clearly shown in the school, with a statement explaining the school's role in referring and monitoring cases of suspected abuse. (Reception, Staff room, Website etc.).
- All adults, (including supply teachers, non-teaching staff and volunteers), new to our school will be given or directed to a copy of; our Safeguarding and Child Protection Policy, Staff Code of Conduct, the

² Safer recruitment practice includes scrutinising applicants, verifying identity and qualifications, obtaining character and professional references, checking previous employment history and that a candidate has the health and physical capacity for the job, and a face to face interview as well as the mandatory check of the Disclosure & Barring Service (DBS) Children's Barring List, and, where appropriate, a Criminal Records Check. The School Staffing (England) Regulations 2009; Safer Recruitment in Education including, Keeping Children Safe in Education September 2016

booklet 'What To Do if You're Worried A Child is Being Abused'³, Keeping Children Safe in Education 2016 Part 1 and Annex B⁴, and the name and contact details of the Designated Safeguarding Lead will be explained as part of their induction into the school. In addition to this, all such staff and volunteers will be made aware of the 'Guidance for Safer Working Practice DfE 2009 for Adults who work with Children and Young People' booklet and the document 'Guidance for safer working practice for those working with children and young people in education settings, 2015 (Safer Recruitment Consortium).⁵

7 Responsibilities

7.1 We understand that our responsibility to safeguard children requires that we all appropriately share any concerns as soon as a staff member or volunteer suspects/knows of a concern that we may have about children. The first point of contact is the DSL or other members of the Safeguarding Team (in their absence). The DSL will inform the Headteacher of any referrals to be made. If any staff member is involved the report is made to the Headteacher. If the Headteacher is involved then the Chair of Governors should be informed.

7.2 If a staff member feels they cannot disclose information to their DSL, Headteacher or Governor(s), they must then follow our schools whistleblowing procedures to report their concerns. (Appendix 6).

7.3 All staff will be versed in our Whistleblowing procedure, understand when it is appropriate to use the procedures and will be given details of the NSPCC whistleblowing helpline.

8 Designated Safeguarding Lead (DSL) – Roles and Responsibilities⁶

8.1 Keeping Children Safe in Education September 2016, Annex B, outlines specific responsibilities of the DSL (A member of the School's Leadership Team) and their responsibilities within this role. Our DSL takes **lead responsibility** for safeguarding and child protection and their key areas of responsibilities include:-

Manage Referrals:

- Refer cases of suspected abuse and neglect to children's social care/police
- The Channel programme where there is a radicalisation concern and support staff with this
- Cases in relation to allegations against staff members to LADO including disclosure and barring
- Cases where any crime may have been committed to the Police

Work with Others:

- Liaise with the Headteacher or principal to inform him or her of issues especially ongoing enquiries under section 47 of the Children Act 1989 and police investigations;
- Liaise with staff on matters of safety and safeguarding and when deciding whether to make a referral by liaising with relevant agencies.
- Act as a source of support, advice and expertise for staff.

³https://www.gov.uk/government/uploads/system/uploads/attachment_data/file/419604/What_to_do_if_you_re_worried_a_child_is_being_abused.pdf

⁴https://www.gov.uk/government/uploads/system/uploads/attachment_data/file/550511/Keeping_children_safe_in_education.pdf

⁵<http://www.safeguardingschools.co.uk/wp-content/uploads/2015/10/Guidance-for-Safer-Working-Practices-2015-final1.pdf>

⁶https://www.gov.uk/government/uploads/system/uploads/attachment_data/file/550511/Keeping_children_safe_in_education.pdf Annex B, Role of Designated Safeguarding Lead

Undertake Training:

- The designated safeguarding lead (and any deputies) should undergo training to provide them with the knowledge and skills required to carry out the role. This training should be updated at least every two years
- Understand the assessment process for providing early help and intervention,
- Have a working knowledge of how local authorities conduct a child protection case conference
- Ensure each member of staff has access to and understands the school's or college's child protection policy and procedures
- Are alert to the specific needs of children in need, those with special educational needs and young carers;
- Are able to keep detailed, accurate, secure written records of concerns and referrals;
- Encourage a culture of listening to children and taking account of their wishes and feelings,
- Understand and support the school or college with regards to the requirements of the Prevent duty

Raise Awareness

- Ensure the school or college's child protection policies are known, understood and used appropriately
- Ensure the school or college's child protection policy is reviewed annually and is available publicly and parents are aware of the fact that referrals about suspected abuse or neglect may be made
- Link with the local LSCB to make sure staff are aware of training opportunities and the latest local policies on safeguarding.

Child Protections Files

- Where children leave the school or college ensure their child protection file is transferred to the new school or college as soon as possible. This should be transferred separately from the main pupil file, ensuring secure transit and confirmation of receipt should be obtained.

Availability

- During term time the designated safeguarding lead (or a deputy) should always be available arrange adequate and appropriate cover arrangements for any out of hours/out of term activities

8.2 Roles and responsibilities of the Headteacher

The Headteacher of Evington Valley will ensure that:

- The policies and procedures adopted by the governing body are fully implemented, and followed by all staff
- The Safeguarding & Child Protection Policy and other policies are updated annually, ratified by the Governing body annually and that relevant policies are available publicly either via the school website, parents evening, open days or by other means.
- Sufficient resources and time are allocated to enable DSL's and other staff to discharge their responsibilities; including taking part in inter-agency meetings and contributing to the assessment of children.
- That the Headteacher has attended Safer Recruitment Training delivered by Leicester City Council, HR Department and that training is refreshed no later than every 5 years; and that at least 1 member of the Governing body has attended Safer Recruitment Training.
- All staff and volunteers feel able to raise concerns about poor or unsafe practice in regard to children, and such concerns are addressed sensitively and effectively in a timely manner. (Whole school approach and child centred practice)

- All staff consider the best interest of a child and are made aware that they have an individual responsibility for referring child protection concerns, promptly and using the proper channels.
- All staff have an understanding of Early Help and have the ability to identify children who would benefit from Early Help intervention.
- That regular external visitors/providers such as cleaners, caterers have shown the school a copy of their H & S and Child Protection guidelines as best practice and where applicable; and that the school has a statement in main reception notifying external visitors who the Schools DSL is and what to do if they have any concerns about a child's welfare
- The DSL's undergo safeguarding and child protection training which is updated regularly, with advice from the LSCB, Safeguarding in Education and in line with Keeping Children Safe in Education, September 2016, Annex B
- New members of staff, temporary or permanent including volunteers are given a full induction that includes Safeguarding and Child Protection Guidelines and names of DSL's.
- That staff undergo and attend annual Whole School Safeguarding Training (INSET)
- All staff are made aware of their right to whistleblow, have a copy of the whistleblowing procedures, are well versed with the procedures and have been made aware of the NSPCC whistleblowing helpline. (Appendix 6)

8.3 Roles and responsibilities of the Governing Body

The Governors of Name of School will ensure that:

- The school has a Safeguarding and Child Protection Policy and procedures in place, and the policy is made available to parents on request and available on the school website (www.evingtonvalley.leicester.sch.uk)
- That all school staff members working with children consider the best interests of children and are advised to maintain an attitude of '*it could happen here*' where safeguarding is concerned
- There is a senior member of the school's leadership team who is designated to take lead responsibility for dealing with child protection – DSL.
- There is an appointed deputy(s) for child protection, in the event of the unavailability of the DSL
- The DSL and the appointed deputy(s) for child protection undertakes training for designated senior persons, in addition to inter-agency child protection training, that is provided by, or to standards agreed by, LSCB, and attends refresher DSL training at two-yearly intervals
- The Headteacher, and all other staff and volunteers who work with children, undertake appropriate training which is kept up-to-date through Whole School Training (annually); and that new staff, temporary staff and volunteers who work with children are made aware of the school's arrangements for child protection and their responsibilities. (Through the induction process)
- There are procedures for dealing with allegations of abuse against members of staff and volunteers (Appendix 3 & 6)
- The chair of governors (or, in the absence of a chair, the vice chair) deals with any allegations of abuse made against the Headteacher, in liaison with the Local Authority Designated Officer. (Appendix 3 & 6)
- The governing body nor individual governors will have a role in dealing with individual cases or a right to details of cases except when exercising their disciplinary functions in respect of allegations against a member of staff
- Any deficiencies or weaknesses brought to the attention of the governing body are rectified
- Policies and procedures are reviewed annually, and information is provided to the Local Authority on how the governing body discharges its duties regarding safeguarding and child protection.

- There is an individual member of the governing body who will champion and lead on issues to do with safeguarding children and child protection within the school, liaise with the DSL, and provide information and reports to the governing body, and that person is appropriately trained to discharge their responsibilities effectively.
- Will ensure that school creates a culture of safe recruitment and, as part of that, adopts recruitment procedures that help deter, reject or identify people who might abuse children (Part three: Safer Recruitment, Keeping Children Safe in Education September 2016).
- Will ensure that at least 1 member of the Governing body has attend Safer Recruitment Training delivered by Leicester City Council, HR Department and that training is regularly refreshed
- That the Chair of the governing body completes the annual Safeguarding in Education Check List – supporting schools to exercise their duties in relation to Safeguarding & Child Protection and return the document to the local authority

9 Supporting Children

- We recognise that a child who is abused, who witnesses violence or who lives in a violent environment may feel helpless and humiliated, may blame him/herself, and find it difficult to develop and maintain a sense of self-worth
- We recognise that the school may provide the only stability in the lives of children who have been abused or who are at risk of harm
- We accept that research shows that the behaviour of a child in these circumstances may range from that which is perceived to be normal, too aggressive or being withdrawn

9.1 Our school will support all students by:

- Encouraging the development of self-esteem and resilience in every aspect of school life including through the curriculum
- Promoting a caring, safe and positive environment within the school
- Liaising and working together with all other support services and those agencies involved in the safeguarding of children including Early Help
- Notifying Children's Social Care as soon as there is a significant concern
- Ensuring that a named teacher is designated for Looked After Children/Children In Need (LAC & CIN) and that an up to date list of LAC/CIN is regularly reviewed and monitored
- Providing continuing support to a student (about whom there have been concerns) who leaves the school by ensuring that such concerns and school medical records are forwarded under confidential cover to the Head at the pupil's new school as a matter of urgency
- Working with partner agencies to support and safeguard children within; Early Help, Children in Need, Child Protection and Looked After Children

10 Confidentiality

We recognise that all matters relating to child protection are confidential and the best interest of a child should be considered at all times.

10.1 The Headteacher or DSL will disclose personal information about a pupil to other members of staff on a need to know basis only. Staff will be informed of relevant details only when the DSL feels their having knowledge of a situation will improve their ability to deal with an individual student/family. A written record will be made of what information has been shared, with whom, and when.

10.2 All staff must be aware that they have a professional responsibility to share information with other agencies in order to safeguard children.

10.3 All staff must be aware that they cannot promise a child to keep secrets which might compromise the child's own safety or well-being, or that of another child as this may ultimately not be in the best interest of the child.

10.4 We will always undertake to share our intention to refer a child to Children's Social Care with their parents/carers consent unless to do so could put the child at greater risk of harm, or impede a criminal investigation. If in doubt, we will consult with the Children's Social Care, duty & Advice Service.

11 Supporting Staff

11.1 We recognise that staff working in the school who have become involved with a child who has suffered harm, or appears to be likely to suffer harm may find the situation stressful and upsetting.

11.2 We will support such staff by providing an opportunity to talk through their anxieties and concerns with the DSL and to seek further support where necessary. This could be provided by, for example, the Headteacher, by Occupational Health and/or a teacher/trade union representative as appropriate.

11.3 We understand that staff should have access to advice on the boundaries of appropriate behaviour. The booklet 'Guidance for Safer Working Practice for Adults who work with Children and Young People 2009' &

Guidance for safer working practice for those working with children and young people in education settings, 2015 (Safer Recruitment Consortium).⁷ provides advice on this and the circumstances which should be avoided, in order to limit complaints against staff of abuse of trust, and/or allegations of physical or sexual abuse. These matters form part of staff induction and are referred to in the staff handbook/code of conduct.

11.4 We recognise that DSL's should have access to support (as in 11.2) and appropriate workshops, courses or meetings as organised or arranged through the Local Authority/LSCB

12 Allegations against staff

12.1 All school staff should take care not to place themselves in a vulnerable position with a child. It is always advisable for interviews or work with individual children or parents to be conducted in view of other adults.

12.2 All staff should be aware of the Whole School Behaviour Policy and Staff Code of Conduct

12.3 All staff should be aware of the Guidance for Safer Working Practices for Adults who work with Children and Young People 2009 & 2015⁸⁹

12.4 All staff as part of their annual safeguarding training will receive E Safety Training and will sign the E-Safety Acceptable Use Agreement. This sets out responsibilities for all staff, ensuring they have an up-to-date awareness of e-safety matters and that all digital communications with students/parents/carers should be a professional level and only carried out using official school systems.

12.5 We understand that a pupil may make an allegation against a member of staff:-

12.6 If such an allegation is made, the member of staff receiving the allegation will immediately inform the Headteacher or the most senior teacher if the Headteacher is not present.

⁷ <http://www.safeguardingschools.co.uk/wp-content/uploads/2015/10/Guidance-for-Safer-Working-Practices-2015-final1.pdf>

⁸ <http://www.safeguardingschools.co.uk/wp-content/uploads/2015/10/Guidance-for-Safer-Working-Practices-2015-final1.pdf>

12.7 The Headteacher/senior teacher on all such occasions will immediately discuss the content of the allegation with the Local Authority Designated Officer and follow the process for managing the concern laid down in the LSCB Procedures (http://llrscb.proceduresonline.com/chapters/p_alleg_staff.html) and the School's Managing Allegations Policy.

12.8 If the allegation made to a member of staff concerns the Headteacher, the person receiving the allegation will immediately inform the Chair of Governors who will consult with Children's Social Care, LADO, without notifying the Headteacher first. (0116 454 2440)

12.9 In all occasions identified in 12.7 & 12.8 above, the school will follow the LSCB/Local Authority procedures for managing allegations against staff and volunteers, a copy of which can be found in the School's Managing Allegations Policy.

12.10 Suspension of the member of staff against whom an allegation has been made needs careful consideration, and we will consult (as in 12.8 above) in making this decision.

12.11 In line with this policy and other school procedures for incident reporting/recording, staff and pupils may provide accounts of events which will be stored under our own secure systems and may be produced in the event of any allegation. However, such accounts must not constitute an official statement and the reporting person must not be questioned over their disclosure at this stage.

12.12 Our lettings agreement for other users requires that the organiser will manage the suspension of adults where necessary from school premises.

12.13 Our School staff are aware of and have an understanding of our 'Guidelines for Avoiding Allegations of Abuse' as outlined in Appendix 4.

13 Whistleblowing

13.1 We recognise that children cannot be expected to raise concerns in an environment where staff fail to do so.

13.2 All staff should be aware of their duty to raise concerns about the attitude or actions of colleagues. If necessary, they should speak to the Chair of Governors or the Local Authority Designated Officer.

13.3 All staff are aware of and understand how to use our schools whistleblowing procedures. (Appendix 6)

13.4 All staff have access to the NSPCC Whistleblowing Helpline

14 Our role in the prevention of abuse

14.1 We recognise that the school plays a significant part in the prevention of harm to our pupils by providing pupils with effective lines of communication with trusted adults, supportive friends and an ethos of protection.

14.2 The school community will therefore:

- Establish and maintain an ethos, which is understood by all staff, which enables children to feel secure and encourages them to talk knowing that they will be listened to. This includes considering the best interest of a child and maintaining the ethos of *'it could happen here'*
- Ensure that all children know there is an adult in the school whom they can approach if they are worried or in difficulty.

- We will provide opportunities for students to develop skills, concepts, attitudes and knowledge that promote their safety and well-being.
- Relevant issues will be addressed through the PSHE curriculum, for example self-esteem, emotional literacy, assertiveness, power, sex and relationship education, e-safety and bullying.
- Relevant safeguarding issues will be addressed through other areas of the curriculum, for example, circle time, English, History, Drama, Art, ICT and E Safety (includes online and offline safety)
- Other areas of work
- All our policies which address issues of power and potential harm, for example bullying, equal opportunities, handling, positive behaviour, will be linked to ensure a whole school approach.
- Our safeguarding policy cannot be separated from the general ethos of the school, which should ensure that students are treated with respect and dignity, taught to treat each other with respect, feel safe, have a voice, and are listened to.

15 Safeguarding students who are vulnerable to extremism

15.1 Since 2010, when the Government published the Prevent Strategy¹⁰ and (Revised Prevent Duty Guidance 2015¹¹), there has been an awareness of the specific need to safeguard children, young people and families from violent extremism. There have been several occasions both locally and nationally in which extremist groups have attempted to radicalise vulnerable children and young people to hold extreme views including views justifying political, religious, sexist or racist violence, or to steer them into a rigid and narrow ideology that is intolerant of diversity and leaves them vulnerable to future radicalisation.

15.2 Evington Valley values freedom of speech and the expression of beliefs/ ideology as fundamental rights underpinning our society's values. Both students and teachers have the right to speak freely and voice their opinions. However, freedom comes with responsibility and free speech that is designed to manipulate the vulnerable or that leads to violence and harm of others goes against the moral principles in which freedom of speech is valued. Free speech is not an unqualified privilege; it is subject to laws and policies governing equality, human rights, community safety and community cohesion.

15.3 The current threat from terrorism in the United Kingdom may include the exploitation of vulnerable people, to involve them in terrorism or in activity in support of terrorism. The normalisation of extreme views may also make children and young people vulnerable to future manipulation and exploitation. Evington Valley is clear that this exploitation and radicalisation should be viewed as a safeguarding concern. Definitions of radicalisation and extremism, and indicators of vulnerability to radicalisation are in Appendix 5.

15.4 Evington Valley seeks to protect children and young people against the messages of all violent extremism including, but not restricted to, those linked to religious ideologies, or to Far Right/Neo Nazi/White Supremacist ideology, Irish Nationalist extremist and Animal Rights movements.

15.5 Risk reduction

15.6 The school governors, the Headteacher and the DSL's for Safeguarding will assess the level of risk within the school and put actions in place to reduce that risk. Risk assessment may include consideration of the school's RE curriculum, SEND policy, assembly policy, the use of school premises by external agencies, integration of students by gender and SEN, anti-bullying policy and other issues specific to the school's profile, community and philosophy.

15.7 When any member of staff has concerns that a student may be at risk of radicalisation or involvement in terrorism, they should speak with the DSL in the first instance

¹⁰ Prevent Strategy 2011 - https://www.gov.uk/government/uploads/system/uploads/attachment_data/file/97976/prevent-strategy-review.pdf & CONTEST Strategy 2011 - https://www.gov.uk/government/uploads/system/uploads/attachment_data/file/97994/contest-summary.pdf

¹¹ Revised Prevent Duty Guidance 2015 <https://www.gov.uk/government/publications/prevent-duty-guidance>

15.8 Numerous factors can contribute to and influence the range of behaviours that are defined as violent extremism, but most young people do not become involved in extremist action. For this reason the appropriate interventions in any particular case may not have any specific connection to the threat of radicalisation, for example they may address mental health, relationship or drug/alcohol issues.

15.9 Our staff have undergone Prevent Awareness Training and understand the steps to follow, via discussions with the DSL, if a referral to the Channel Programme is required

16 Safeguarding students who are vulnerable to; Child Sexual Exploitation/Trafficking, Grooming, Sexting, Children using Sexually Abusive Behaviours/Peer on Peer Abuse, Forced Marriage/Honour Based Violence, Domestic Violence, Female Genital Mutilation and Child Missing From Education

16.1 Our Safeguarding and Child Protection Policy along with the school's values, ethos and behaviour policies, provides the basic platform to ensure children and young people are given the support to respect themselves and others, stand up for themselves and protect each other.

- Our school keeps itself up to date on the latest advice and guidance provided to assist in addressing specific vulnerabilities and forms of exploitation, as outlined in section 17 & 18 below.
- Our staff are supported to recognise warning signs and symptoms in relation to specific issues, and include such issues in an age appropriate way in their curriculum
- Our school works with and engages our families and communities to talk about such issues,
- Our school staff are supported to talk to families about sensitive concerns in relation to their children and to find ways to address them together wherever possible.
- Our DSL knows where to seek and get advice as necessary.
- Our school school brings in experts and uses specialist material to support the work we do.
- Our school staff fully understand how to raise a concern using the appropriate channels.

17 Child Sexual Exploitation & Trafficking

17.1 CSE involves young people receiving something in exchange for sexual acts. Sexual exploitation can take many forms ranging from seemingly consensual relationships to serious gang and group exploitation.

17.2 Evington Valley staff are aware that sexual exploitation can take many forms and that pupils may not exhibit external signs of abuse. Our staff are also aware that it is an offence carrying a maximum sentence of two years imprisonment where an adult (any adult) intentionally communicates (for example, by e-mail, text message, written note or orally) with a child under 16 (whom the adult does not reasonably believe to be aged 16 or over) for the purpose of obtaining sexual gratification. This act forms part of Section 67 of the Serious Crime Act 2015¹² (offence of Sexual Communication with a Child) and came into force on 3 April 2017.

https://www.gov.uk/government/uploads/system/uploads/attachment_data/file/604931/circular-commencement-s67-serious-crime-act-2015.pdf

17.3 Therefore, our staff are vigilant for the less obvious signs, such as lots of new electronic equipment, when before there was none, seeming to have extra money to spend, moving away from established friendship groups, and the use of language appropriate/inappropriate for the child's age.

17.4 Our school staff are also aware of some of the signs and symptoms of CSE through LSCB Leaflets¹³, staff induction and as part of annual Whole School Safeguarding Training which in addition to the CSE & Trafficking Course delivered through Children's Workforce Matters¹⁴ that the DSL has attended.

¹² <https://www.gov.uk/government/publications/circular-201701-sexual-communication-with-a-child-implementation-of-s67-of-the-serious-crime-act-2015>

¹³ <http://www.lcitylscb.org/information-for-practitioners/safeguarding-topics/child-sexual-exploitation/>

¹⁴ <http://www.childrensworkforcematters.org.uk>

17.5 Our school staff follow guidance and procedures as outlined in 'Safeguarding Children and Young People from Sexual Exploitation in Leicester, Leicestershire and Rutland'¹⁵ available on the LSCB website.

17.6 Our school staff are aware that if a disclosure is raised in reaction to CSE, that it will be reported straight to the DSL/SLT or Duty & Advice in their absence.

17.7 Grooming & Sexting can also form part of CSE both online and offline

17.8 Groomers will hide their true intentions and may spend a long time gaining a child's trust through a range of mediums including social media platforms. Section 67 of the Serious Crime Act 2015 (offence of Sexual Communication with a Child) which came into force on 3 April 2017 also applies to Sexting and Grooming and our staff are fully aware of the legislation.

https://www.gov.uk/government/uploads/system/uploads/attachment_data/file/604931/circular-commencement-s67-serious-crime-act-2015.pdf

17.9 Sexting is when someone sends or receives a sexually explicit text, image or video. This includes sending 'nude pics', 'rude pics' or 'nude selfies'. This can be via Peer on Peer or other adults. As recently as June 2017, figures show there have been more than 4,000 cases since 2013 where children have taken explicit pictures of themselves and sent them to others, the youngest being 5 years old and research from Child Line suggest six out of ten teenagers say they have been asked for sexual images or videos. It is illegal to possess, take or distribute sexual images of someone who is under 18, even if the young person under the age of 18 has taken the image themselves and passed it on themselves.

Evington Valley takes a zero tolerance approach if children are found to be sending sexual images of themselves or others whether intentionally or maliciously in our school. Evington Valley has a duty of care to inform the Police and Childrens Social Care if such a case occurs. We will also notify parents directly if their children are involved. In addition to supporting our children with being safe in a digital world and highlighting the dangers, our staff have also been issued with the government guidance on sexting 'Sexting in Schools and Colleges' 2016.

https://www.gov.uk/government/uploads/system/uploads/attachment_data/file/551575/6.2439_KG_NCA_Sexting_in_Schools_WEB_1_.PDF

17.10 Evington Valley staff follow school procedures in reporting such concerns and promote E Safety and dangers of Sexting, Grooming and CSE through lessons, PSHE and assemblies. Our pupils are taught how to keep safe on and off line and E Safety is promoted throughout the school and home environment. Our school have also discussed local and national cases where grooming of young children has taken place such as the Kayleigh Haywood Story to highlight the dangers.

17.11 Our E safety policy is highlighted to staff, pupils and parents and is available on our school's website including our acceptable usage policy.

18 Peer on Peer Abuse/Children using Abusive Behaviour¹⁶ (CUAB)

18.1 Evington Valley takes Peer on Peer abuse seriously and we understand that some children are more vulnerable to physical, sexual and emotional bullying and abuse by their peers. In our school, this kind of abuse will always be taken as seriously as abuse perpetrated by an adult and as seriously as a child who is suffering or likely to suffer significant harm.

18.2 Our staff understand that a significant proportion of sexual related offences are committed by teenagers and, on occasion, such offences are committed by younger children. Our staff therefore understand not to

¹⁵ [http://llrscb.proceduresonline.com/pdfs/cse_guidance.pdf#search="CSE"](http://llrscb.proceduresonline.com/pdfs/cse_guidance.pdf#search=)

^{16&17} LSCB CUSAB Procedures - http://llrscb.proceduresonline.com/chapters/p_abuse_child_yp.html#_refer

dismiss some abusive sexual behaviour as 'normal' between young people and not to create high thresholds in such cases before appropriate action is taken.

18.3 Staff and carers of children living away from home need clear guidance and training to identify the difference between consenting and abusive, and between appropriate and exploitative peer relationships. Our school will provide information, guidance and training to relevant staff members to support them with this.

18.4 Children and young people who abuse others should be held responsible for their abusive behaviour, while being identified and responded to in a way that meets their needs as well as protecting others and our school has clear guidelines around this.

18.5 Our school also refers to the LSCB procedures (Chapter 2.2)¹⁷ which are written with particular reference to sexually abusive and inappropriate behaviours. Keeping Children Safe in Education 2016 also makes reference to Peer on Peer abuse and where there are serious child protection concerns, as a result of non-sexual violence by a child or young person, leading to actual or possible significant harm, our safeguarding and child protection measures will be implemented.

18.6 If our staff have a concern that a child might have been abused by another child and/or is displaying inappropriate sexualised behaviour, staff will in the first instance refer their concerns to the DSL. The DSL will then directly contact Children's Social Care/DAS in accordance with the LSCB Referrals Procedure¹⁸ to decide how the incident will be managed.

18.7 Our staff are aware of what Peer on Peer abuse is at national and local levels through our annual Whole School Training and our DSL has attended CUAB Training delivered by Safeguarding in Education to enhance their knowledge in this area further.

19 Domestic Violence and Abuse & Violence between young people (Teen relationships)

19.1 The cross-government definition of domestic violence and abuse is¹⁹:

Any incident or pattern of incidents of controlling, coercive, threatening behaviour, violence or abuse between those aged 16 or over who are, or have been, intimate partners or family members regardless of gender or sexuality. The abuse can encompass, but is not limited to:

- psychological
- physical
- sexual
- financial
- emotional

19.2 There have been a number of high profile cases both locally and nationally where domestic violence and abuse has had a significant and direct impact on the child and their wellbeing. If the school is made aware of incidents of domestic violence which is impacting on a child within the school, (suspicions and allegations of abuse, harm and significant risk to a child), the school will follow Local Authority and Leicester Safeguarding Board guidelines in reporting such concerns to Childrens Social Care, Duty and Advice or the Police and will also seek further guidance where necessary.

19.3 Domestic abuse is not limited to adults; there is an increasing awareness of violence from one teenager to another;

¹⁷ http://lscb.proceduresonline.com/chapters/p_abuse_child_vp.html?zoom_highlight=cusab

¹⁶ LSCB CUSAB Procedures - http://lscb.proceduresonline.com/chapters/p_abuse_child_vp.html#_refer

¹⁹ <https://www.gov.uk/guidance/domestic-violence-and-abuse>

- 1 in 5 teenage girls have been assaulted by a boyfriend
- Young women are more likely to experience sexual violence than other age groups
- Young women with older partners are at increased risk of victimisation
- Recent surveys (including NSPCC²⁰, Zero Tolerance and End Violence Against Women campaign) reveal that approximately 40% of our young people are already being subjected to relationship abuse in their teenage years

19.4 If Evington Valley is made aware of children behaving this way with other children within our school, and violence is apparent between the young people's intimate relationship; this includes issues around the use of social media and Sexting, we will view this as a significant child welfare concern and where necessary, the appropriate agencies will be informed. This includes Children Social Care and the Police.

19.5 If such cases are prevalent within our school, whether the incident involves Adult Relationships or Teen Relationships, the school will also work closely with the child and the Headteacher/DSL will endeavour to support the child who has been exposed to this type of violence and abuse with the involvement of (where appropriate) their parents/carers and their boyfriend/girlfriend.

19.6 Furthermore, involvement through the Early Help Offer can also support the child and parents/carers and the school will ensure communications and multiagency working with Social Care and Early Help is maintained to fully support the child and their family. (Victims). Staff will also work with all the children in our school to ensure information and the importance of healthy relationships is highlighted through assemblies, circle time and PSHE lessons.

20 Child Missing From Education

20.1 A Child Missing From Education forms part of the wider LSCB procedures²¹ (Chapter 2.10) for children who go missing from School, Home, Care Education and includes Families who go missing.

20.2 A pupil missing from education on a number of occasions is a potential indicator of abuse and neglect.

20.3 Should a pupil go missing from Evington Valley our Attendance & Welfare Officer, Yasmin Sarang, will inform the DSL/SLT and contact the Educational Welfare Service. The DSL will consider further actions and/or support should it be required and to ensure they help identify the any risk of abuse and neglect, including sexual exploitation and to help prevent the risks of them going missing in future.

20.4 At Evington Valley if a child is no longer coming to our school where the parent/carer has removed them, we will ensure that appropriate steps are taken and measures are in place. I.e. we will follow our school guidelines in monitoring those parents/carers home tutoring, follow procedures where a child is taken out of school to go on holiday, where a child is removed from school as the family are moving away;

20.5 We will notify All relevant partner agencies/services including Education Welfare, correct forms will be completed, information will be recorded and child folders/information will be passed on to the appropriate person (where applicable).

²⁰ <https://www.nspcc.org.uk/services-and-resources/research-and-resources/pre-2013/partner-exploitation-and-violence-in-teenage-intimate-relationships/>

²¹ <http://llrscb.proceduresonline.com/chapters/contents.html>

21 Female Genital Mutilation

21.1 Female Genital Mutilation is an illegal operation under the Female Mutilation Act 2003, is a form of child abuse and as such, is dealt with under the school's Child Protection & Safeguarding Policy.

21.2 Definition of Female Genital Mutilation²² (FGM):

FGM comprises of all procedures involving partial or total removal of the external female genitalia or other injury to the female genital organs whether for cultural or non-therapeutic reasons.

Professionals in all agencies, and individuals and groups in relevant communities, need to be alert to the possibility of a girl being at risk of FGM, or already having suffered FGM. Therefore, our staff have been briefed on the importance of FGM through our Whole School Safeguarding on Thursday 24th August 2017, and are aware of some of the signs and symptoms.

Responding to FGM - The school will ensure;

- We raise awareness of staff in regard to the issues of FGM through Whole School Training
- Staff have a clear understanding of what FGM is
- FGM is within the schools Safeguarding Policy
- Sex and Health curriculum supports pupils understanding of their bodies and keeping themselves safe
- Monitoring absences

21.3 As of October 2015, it became a mandatory responsibility of all staff members to report any suspicion of FGM to the police if the child is under 18 years of age. If any of our staff at Evington Valley are aware of such concerns, staff will, in the first instance, report their concerns to the DSL and/or Headteacher and then take appropriate steps to either directly contact the Police or seek advice from Duty & Advice, Childrens Social Care.

21.4 Any concerns raised including any referrals made will be; monitored closely and recorded following our school's procedures by the staff members raising the concern, the DSL or both.

22 Forced Marriage/Honour Based Violence

22.1 A forced marriage is a marriage that is performed under duress and without the full and informed consent or free will of both parties. Duress cannot be justified on religious or cultural grounds. Victims of forced marriage may be the subject of physical violence, rape, abduction, false imprisonment, enslavement, emotional abuse, and murder. It is important not to confuse 'forced' marriage with 'arranged' marriage. In the instance of an 'arranged' marriage both parties freely consent.

22.2 The Governments definition of a Forced Marriage²³ is;

A forced marriage is where one or both people do not (or in cases of people with learning disabilities, cannot) consent to the marriage and pressure or abuse is used. It is an appalling and indefensible practice and is recognised in the UK as a form of violence against women and men, domestic/child abuse and a serious abuse of human rights.

²² Multiagency Practice Guidelines: FGM Revised April 2016 -

https://www.gov.uk/government/uploads/system/uploads/attachment_data/file/512906/Multi_Agency_Statutory_Guidance_on_FGM_-_FINAL.pdf

²³ <https://www.gov.uk/guidance/forced-marriage>

22.3 Evington Valley staff, through induction and Whole School Training are aware of the importance and impact on a child/student who is involved in such situations.

22.4 Honour-based Violence – is a term that embraces a variety of crimes of violence (mainly but not exclusively against women) including domestic abuse, which is perpetrated in the name of so called 'honour'. The honour code which it refers to is set at the discretion of male relatives and women who do not abide by the 'rules' are then punished for bringing shame on the family. Infringements may include a woman having a boyfriend; rejecting a forced marriage; pregnancy outside of marriage; interfaith relationships; seeking divorce, inappropriate dress or make-up and even kissing in a public place.

22.5 HBV can exist in any culture or community where males are in position to establish and enforce women's conduct. However, males can also be victims, sometimes as a consequence of a relationship which is deemed to be inappropriate, if they are gay, have a disability or if they have assisted a victim.

22.6 In addition, the Forced Marriage Unit have issued guidance on Force Marriage and vulnerable adults due to an emerging trend of cases where such marriages involving people with learning difficulties. This is not a crime which is perpetrated by men only, sometimes female relatives will support, incite or assist. It is also not unusual for younger relatives to be selected to undertake the abuse as a way to protect senior members of the family. Sometimes contract killers and bounty hunters will also be employed

22.7 In such cases, disclosures and concerns relating to Forced Marriage/Honour Based Violence will be reported directly to the DSL and the Police due to the impact it could have on the child/student in the wider community. Information will be sought from Children's Social Care Duty & Advice and where appropriate and Police and the Forced Marriage Unit.

23 Abuse linked to faith, beliefs and culture

23.1 Child abuse is never acceptable in any community, in any culture, in any religion, under any circumstances. However, some children are subject to certain kinds of child abuse linked to their faith, belief or culture and this includes abuse that might arise through a belief in spirit possession or other spiritual or religious beliefs.

This kind of abuse can also include;

- Belief in concept of witchcraft, magic or voodoo
- Demons or the devil acting through children or leading them astray
- The evil eye or djinns and dakini
- Ritual or muti murders
- Breast Ironing
- Female Genital Mutilation
- Honour based violence and Forced Marriage
- Chastisement of a child in a Place of Worship

23.2 Whilst this is not an exhaustive list, NAME OF SCHOOL recognises that sadly, such cases are on the increase within the community and as a school, we take such incidents as seriously as any other kind of abuse perpetrated by an adult on a child.

23.3 If the school has been made aware of such a case, the school will follow LSCB procedures and where appropriate, report the incident to Children Social Care and/or the Police.

23.4 As a school, our staff are aware of some of the signs of this kind of abuse and have attended training to support them further. We also work closely with all our children to promote healthy relationships and British Values. Our code of conduct (Children/Teachers/Parents & Carers), also teaches our children mutual respect of other faith, beliefs and cultures in a positive manner rather than negative. We believe and respect each other in our school and maintain this ethos throughout the teaching and learning environment.

24 Early Help and Supporting Children and their Families

24.1 Early Help and prevention is about how different agencies work together to help children, young people and their families at any point in their lives to prevent or reduce difficulties. This means providing support as soon as a problem emerges at any point in a child's life, from the foundation years through to the teenage years.

24.2 At Evington Valley, key staff members and DSL's have attended our LSCB's Early Help and Early Help Assessment Training and our staff are prepared to identify any children who may benefit from Early Help. (signpost/refer accordingly).

25 Bullying and Safeguarding

25.1 **The Law** - Some forms of bullying are illegal and should be reported to the police. These include:

- violence or assault
- theft
- repeated harassment or intimidation, for example name calling, threats and abusive phone calls, emails or text messages
- hate crimes

25.2 Bullying is defined as 'behaviour by an individual or group, usually repeated over time, which intentionally hurts another individual or group either physically or emotionally'. Repeated bullying usually has a significant emotional component, where the anticipation and fear of being bullied seriously affects the behaviour of the victim.

25.3 It can be inflicted on a child by another child or an adult. Bullying can take many forms (for instance, cyber-bullying via text messages or the internet), and is often motivated by prejudice against particular groups, for example on grounds of race, religion, gender, sexual orientation, or because a child is adopted or has caring responsibilities. It might be motivated by actual differences between children, or perceived differences.

25.4 Evington Valley has a legal duty to ensure we have an Anti-Bully Policy in place and that all staff, children and parents/carers are made aware of it. This document can be accessed on our schools website www.evingtonvalley.leicester.sch.uk and sets out clear procedures in managing such incidents within the school. We also deliver work in school about anti-bullying through assemblies and lessons and our staff are trained in appropriately dealing with such incidents.

25.5 However, at times, bullying such as Peer on Peer abuse; sexualised behaviour, serious incidents of harm, homophobic behaviours, cyber bullying and Sexting/Use of mobile phones will be taken seriously and as a serious safeguarding concern especially if the child is at risk of significant harm. In such cases, our Designated Safeguarding Lead and the Headteacher will assess the situation and seek advice and guidance from Childrens Social care or the Police especially in relation to illegal activity as outlined in section **25.1**.

26 Private Fostering

26.1 A private fostering arrangement is one that is made without the involvement of the local authority to look after a child under the age of 16 (or under 18 if disabled) by someone other than a parent or close relative, for 28 days or more and can include those living with extended family members. So, this could be a child living with people as stated below:

| Private Fostering includes a child living with: | Private Fostering does not include a child living with: |
|--|--|
| Godparents | Mother/Father |
| Great Grandparents | Brothers/Sister |
| Great Aunts or Uncles | Grandparents |
| Family Friends | Aunts/Uncles |
| Step parents where a couple isn't married or in a civil partnership | Step Parents where a couple is married or in a civil partnership |
| Cousins | Children and young people who are being looked after by the Authority. |
| A host family which is caring for a child from overseas while they are in education here | |

26.2 It's a legal duty (Children Act 1989) for parents or the private foster carer to notify the local authority of whenever a child is not living with a close relative. This should be done six weeks before the arrangement takes place or immediately if it is unplanned or already happening. This is so the local authority can work with private foster carers to keep children safe and also support anyone who is privately fostering.

26.3 Evington Valley staff are aware of what Private Fostering is and staff in our school understand their legal duty under the Children Act 1989 to notify the Local Authority/Childrens Social Care, they are made aware of such cases. Evington Valley understands the apprehension some carers may feel is raising such concerns and the difficulty that some carers may have if faced with this situation. As such, the school and staff will endeavour to support the carers and the child to ensure the wellbeing of the child is maintained and help and advice is made available.

27 What we do when we are concerned about a child?

27.1 Where risk factors are present but there is no evidence of a particular risk, then our DSL/SLT advises us on preventative work that can be done within school to engage the student into mainstream activities and social groups. The DSL/SLT may well be the person who talks to and has conversations with the student's family, sharing the school's concern about the young person's vulnerability and how the family and school can work together to reduce the risk.

27.2 In this situation, depending on how worried we are and what we agree with the parent and the young person (as far as possible)

27.3 The DSL can decide to notify Duty and Advice, Early Help or Family Support Services so that a strategic overview can be maintained and any themes or common factors can be recognised; and The school will review the situation after taking appropriate action to address the concerns.

27.4 The DSL will also offer and seek advice about undertaking an Early Help assessment and/or making a referral to Early Help services.

27.5 In addition to the above, our School staff will refer to Appendix 2 'Procedure to follow in cases of possible, alleged or suspected abuse, or serious cause for concern about a child' when dealing with a child Disclosure or an allegation of abuse.

28 Policy review

The Governing Body of our school will review the Safeguarding and Child Protection Policy annually.

29 Other Relevant Policies

Evington Valley's Governing Body's legal responsibility for safeguarding the welfare of the children goes beyond child protection. Their duty is to ensure that safeguarding permeates all activity and functions. This policy therefore complements and supports a range of other policies, for instance:

- Children's behaviour management, including drug/alcohol use
- Staff behaviour and management (Code of Conduct; Safer Working Practice)
- Parents behaviour and management (Code of conduct when in school)
- Racist incidents and Homophobic Behaviour
- Anti-bullying including Peer Abuse and Children Using Sexually Abusive behaviour
- Physical interventions/restraint
- Special Educational Needs, Mental Health Issues and Disabled Children
- Trips and visits
- Work experience and work related learning placements
- First aid and the administration of medicines
- Health and safety & Site security
- Sex and Relationship Education/Underage Sexual Activity (Healthy Relationships and Domestic Violence in Young People)
- Equal opportunities
- ICT and E-safety, including on and offline and acceptable usage
- Extended School Activities
- Mobile phone and camera use (digital equipment)
- LAC Policy
- Visitor Policy
- Whistleblowing Procedures (Appendix 6)

The above list is not exhaustive and when undertaking development or planning of any kind, Evington Valley and our Governors will consider the best interest of our children and any implications for safeguarding children and promoting their welfare.

30. Useful contact numbers and links

| | |
|---|--------------------|
| Leicestershire Police | 999 / 0116 2222222 |
| One Front Door Duty & Advice (Includes out of hours) das.team@leicester.gov.uk Early Help & Support/ early-help@leicester.gov.uk | 0116 454 1004 |
| Children's Safeguarding Unit | 0116 454 2440 |
| Safeguarding in Education Julie Chapaneri & Mohammed Patel Safeguardingineducation@leicester.gov.uk | 0116 454 2440 |
| Local Authority Designated Officer (LADO) Jude Atkinson | 0116 454 2440 |
| Leicester Safeguarding Childrens Board (LSCB) http://www.lcitylscb.org/ | 0116 454 6520 |
| Prevent (Advice / Referral) Will Baldet (CVE Coordinator Leicester, Leicestershire & Rutland) City: Daxa Pancholi - daxa.pancholi@leicester.gov.uk County: Gurjit Samra-Rai - gurjit.samra-rai@leics.gov.uk Police Team - prevent.team@leicestershire.pnn.police.uk | 07403 727727 |
| UAVA – United against violence and abuse (Domestic Violence, Abuse between Teenagers and Domestic Violence in BME community) info@uava.org.uk | 0808 80 200 28 |
| Forced Marriage Unit fm@fco.gov.uk | 020 7008 0151 |
| Female Genital Mutilation Helpline fgmhelp@nspcc.org | 0800 028 3550 |
| NSPCC Whistleblowing Advice Line help@nspcc.org.uk | 0800 0280285 |

| |
|--|
| Useful websites and links |
| www.thinkuknow.co.uk www.disrespectnobody.co.uk www.saferinternet.org.uk www.internetmatters.org www.pshe-association.org.uk www.educateagainsthate.com www.gov.uk/government/publications/the-use-of-social-media-for-online-radicalisation |

APPENDIX 1 - DEFINITION AND INDICATORS OF ABUSE

1. NEGLECT

Neglect is the persistent failure to meet a child's basic physical and/or psychological needs, likely to result in the serious impairment of the child's health or development. Neglect may occur during pregnancy as a result of maternal substance abuse. Once a child is born, neglect may involve a parent or carer failing to:

Provide adequate food, clothing and shelter (including exclusion from home or abandonment);
Protect a child from physical and emotional harm or danger;
Ensure adequate supervision (including the use of inadequate care-givers); or
Ensure access to appropriate medical care or treatment.

It may also include neglect of, or unresponsiveness to, a child's basic emotional needs.

The following may be indicators of neglect (this is not designed to be used as a checklist):

- Constant hunger;
- Fabricated or Induced Illnesses (Munchausen Syndrome by Proxy)
- Stealing, scavenging and/or hoarding food;
- Frequent tiredness or listlessness;
- Frequently dirty or unkempt;
- Often poorly or inappropriately clad for the weather;
- Poor school attendance or often late for school;
- Poor concentration;
- Affection or attention seeking behaviour;
- Illnesses or injuries that are left untreated;
- Failure to achieve developmental milestones, for example growth, weight;
- Failure to develop intellectually or socially;
- Responsibility for activity that is not age appropriate such as cooking, ironing, caring for siblings;
- The child is regularly not collected or received from school; or
- The child is left at home alone or with inappropriate carers

Neglect is a priority for Leicester, Leicestershire & Rutland LSCB. Neglect has been identified as a feature in national & local Serious Case Reviews (SCR's), local learning reviews and multi-agency audits. Our local LSCB have developed a *Neglect Toolkit* to support practitioners identify neglect earlier in families. Key staff members and DSL's in our school are versed with this document and understand when to use it.

<http://lrsb.org.uk/uploads/lr-lscb-neglect-toolkit-2016.pdf>

2. PHYSICAL ABUSE

Physical abuse may involve hitting, shaking, throwing, poisoning, burning or scalding, drowning, suffocating or otherwise causing physical harm to a child. Physical harm may also be caused when a parent or carer fabricates the symptoms of, or deliberately induces, illness in a child.

The following may be indicators of physical abuse (this is not designed to be used as a checklist):

- Multiple bruises in clusters, or of uniform shape;

- Bruises that carry an imprint, such as a hand or a belt;
- Bite marks;
- Round burn marks;
- Multiple burn marks and burns on unusual areas of the body such as the back, shoulders or buttocks;
- An injury that is not consistent with the account given;
- Changing or different accounts of how an injury occurred;
- Bald patches;
- Symptoms of drug or alcohol intoxication or poisoning;
- Unaccountable covering of limbs, even in hot weather;
- Fabricated or Induced Illnesses (Munchausen Syndrome by Proxy)
- Fear of going home or parents being contacted;
- Fear of medical help;
- Fear of changing for PE;
- Inexplicable fear of adults or over-compliance;
- Violence or aggression towards others including bullying; or
- Isolation from peers.

3. SEXUAL ABUSE

Sexual abuse involves forcing or enticing a child or young person to take part in sexual activities, not necessarily involving a high level of violence, whether or not the child is aware of what is happening. The activities may involve physical contact, including assault by penetration (for example, rape or oral sex) or non-penetrative acts such as masturbation, kissing, rubbing and touching outside of clothing. They may also include non-contact activities, such as involving children in looking at, or in the production of, sexual images, watching sexual activities, encouraging children to behave in sexually inappropriate ways, or grooming a child in preparation for abuse (including via the internet). Sexual abuse is not solely perpetrated by adult males. Women can also commit act of sexual abuse, as can other children.

The following may be indicators of sexual abuse (this is not designed to be used as a checklist):

- Sexually explicit play or behaviour or age-inappropriate knowledge;
- Anal or vaginal discharge, soreness or scratching;
- Reluctance to go home;
- Inability to concentrate, tiredness;
- Refusal to communicate;
- Thrush, persistent complaints of stomach disorders or pains;
- Eating disorders, for example anorexia nervosa and bulimia;
- Attention seeking behaviour, self-mutilation, substance abuse;
- Aggressive behaviour including sexual harassment or molestation;
- Unusual compliance;
- Regressive behaviour, enuresis, soiling;
- Frequent or open masturbation, touching others inappropriately;
- Depression, withdrawal, isolation from peer group;
- Reluctance to undress for PE or swimming; or
- Bruises or scratches in the genital area.

3a. SEXUAL EXPLOITATION

Child sexual exploitation occurs when a child or young person, or another person, receives “something” (for example food, accommodation, drugs, alcohol, cigarettes, affection, gifts, money) as a result of the child/young person performing sexual activities, or another person performing sexual activities on the child/young person. Sexual Exploitation can also include Grooming and Sexting.

The presence of any significant indicator for sexual exploitation should trigger a referral to children’s social care. The significant indicators are: (no an exhaustive list)

- Having a relationship of concern with a controlling adult or young person (this may involve physical and/or emotional abuse and/or gang activity);
- Entering and/or leaving vehicles driven by unknown adults;
- Possessing unexplained amounts of money, expensive clothes or other items;
- Frequenting areas known for risky activities;
- Being groomed or abused via the Internet and mobile technology; and
- Having unexplained contact with hotels, taxi companies or fast food outlets.

5. EMOTIONAL ABUSE

Emotional abuse is the persistent emotional maltreatment of a child such as to cause severe and persistent adverse effects on the child's emotional development. It may involve conveying to children that they are worthless or unloved, inadequate, or valued only insofar as they meet the needs of another person. It may include not giving the child opportunities to express their views, deliberately silencing them or 'making fun' of what they say or how they communicate. It may feature age or developmentally inappropriate expectations being imposed on children. These may include interactions that are beyond the child's developmental capability, as well as overprotection and limitation of exploration and learning, or preventing the child participating in normal social interaction. It may also involve seeing or hearing the ill-treatment of another person. It may involve serious bullying (including cyber bullying), causing children frequently to feel frightened or in danger, or the exploitation or corruption of children. Some level of emotional abuse is involved in all types of maltreatment. The following may be indicators of emotional abuse (this is not designed to be used as a checklist):

- The child consistently describes him/herself in very negative ways – as stupid, naughty, hopeless, ugly;
- Over-reaction to mistakes;
- Delayed physical, mental or emotional development;
- Sudden speech or sensory disorders;
- Inappropriate emotional responses, fantasies;
- Neurotic behaviour: rocking, banging head, regression, tics and twitches;
- Self-harming, drug or solvent abuse;
- Fear of parents being contacted;
- Running away;
- Compulsive stealing;
- Appetite disorders - anorexia nervosa, bulimia; or
- Soiling, smearing faeces, enuresis.

N.B.: Some situations where children stop communication suddenly (known as “traumatic mutism”) can indicate maltreatment

6. RESPONSES FROM PARENTS

Research and experience indicates that the following responses from parents may suggest a cause for concern across all four categories:

- Delay in seeking treatment that is obviously needed;
- Unawareness or denial of any injury, pain or loss of function (for example, a fractured limb);
- Incompatible explanations offered, several different explanations or the child is said to have acted in a way that is inappropriate to her/his age and development;
- Reluctance to give information or failure to mention other known relevant injuries;
- Frequent presentation of minor injuries;
- A persistently negative attitude towards the child;
- Unrealistic expectations or constant complaints about the child;
- Alcohol misuse or other drug/substance misuse;
- Severe chastisement of a child including withholding food and using food as a form of punishment;
- Parents request removal of the child from home; or
- Violence between adults in the household.

7. SEND CHILDREN (Special Educational Needs and Disabilities)

Evington Valley is an inclusive school and welcomes all pupils including those with SEND. We believe in providing every possible opportunity to enable our pupils to develop their full potential whilst promoting their self-esteem and valuing their individuality.

Some children have barriers to learning that mean they have special needs and require particular action by the school. Our dedicated SENCO and teachers take account of these requirements and make provision, where necessary, to support individuals or groups of children and thus enable them to participate effectively in curriculum and assessment activities.

Key issues for safeguarding children with disabilities include:

- Social isolation
- Reliance on others for personal care
- Impaired capacity to resist or report abusive behaviour
- Reduced access to someone to tell
- Especially vulnerable to bullying and intimidation
- More frequently away from home, eg. in hospital, respite care or residential living

Our SENCO and teachers have attended appropriate training as part of their CPD; whole school safeguarding training, understand the vulnerability of SEND children and understand that SEND children may be at higher risk of abuse or neglect.

Some indicators concerns could include:

- A bruise in a site that might not be of concern on an ambulant child, such as the shin, might be of concern on a non-mobile child
- Not getting enough help with feeding leading to malnourishment

- Poor toileting arrangements
- Lack of stimulation
- Unjustified and/or excessive use of restraint
- Rough handling, extreme behaviour modification e.g. deprivation of liquid, medication, food or clothing
- Unwillingness to try to learn a child's means of communication
- Ill-fitting equipment e.g. callipers, sleep boards, inappropriate splinting; misappropriation of a child's finances
- Invasive procedures which are unnecessary or are carried out against the child's will
- A lack of knowledge about the impact of disability on the child
- A lack of knowledge about the child, e.g. not knowing the child's usual behaviour
- Not being able to understand the child's method of communication
- Confusing behaviours that may indicate the child is being abused with those associated with the child's disability
- Denial of the child's sexuality
- Behaviour, including sexually harmful behaviour or self-injury may be indicative of abuse
- Being aware that certain health/medical complications may influence the way symptoms present or are interpreted.

Evington Valley has a specific SEND Policy. All our staff have access to this policy and key staff members are also aware of the LSCB Procedures²⁴ on line. As best practice our school will ensure we:

- Provide starting points for the development of an appropriate curriculum
- Identify and focus attention on action to support the child within the class
- Use the assessment processes to identify any learning difficulties
- Ensure ongoing observation and assessments provide regular feedback about the child's achievements and experiences to form the basis for planning the next steps of the child's learning
- Help disabled children make their wishes and feelings known in respect of their care and treatment;
- Ensure that disabled children receive appropriate personal, health, and social education (including sex education);
- Make sure that all disabled children know how to raise concerns, and giving them access to a range of adults with whom they can communicate.
- Those disabled children with communication impairments should have available to them at all times a means of being heard;
- Close contact with families, and a culture of openness on the part of services;
- Guidelines and training for staff on good practice in intimate care; handling difficult behaviour; consent to treatment; anti-bullying strategies; and sexuality and sexual behaviour among young people;
- Guidelines and training for staff working with disabled children aged 16 and over to ensure that decisions about disabled children who lack capacity will be governed by the Mental Health Capacity Act once they reach the age of 16.
- Use specialist service needs/multi-agency approach if as a school we feel additional, support resources and interventions are required.

²⁴ http://llrscb.proceduresonline.com/chapters/p_abuse_disabld.html?zoom_highlight=Disabled

APPENDIX 2 - PROCEDURE TO FOLLOW IN CASES OF POSSIBLE, ALLEGED OR SUSPECTED ABUSE, OR SERIOUS CAUSE FOR CONCERN ABOUT A CHILD: FOR ALL STAFF MEMBERS

Teachers are in a unique position to identify and help children who may be being abused. Although all schools are required to have a named designated teacher with responsibility for co-ordinating child protection, this should not diminish the role all teachers have in protecting children. Child abuse usually comes to the attention of teachers in one of four ways:

- a direct allegation from the child being abused,
- a third party (e.g. friend, classmate) report,
- through the child's behaviour
- or through observation of an injury to the child.

When a child makes a disclosure, or when concerns are received from other sources, do not investigate, ask leading questions, examine children, or promise confidentiality. You may ask questions of a clarifying nature – such as 'who, what, where, when, how?' or use the acronym TED – 'Tell me, 'Explain it to me', Describe it to me.'

Remember, the way in which you talk to the child may have an effect on any subsequent legal proceedings. You need to be open and non-judgemental. Children making disclosures should be reassured and, if possible at this stage, should be informed what action will be taken next.

As soon as possible write a dated and timed note of what has been disclosed or noticed, said or done and report to the Designated Safeguarding Lead (DSL). It is important to act swiftly to avoid delays.

As a general guide, it is important to remember the following:

SECRETS - A child's trust can place a heavy responsibility on teachers, particularly if they want the abuse to remain a secret. You should tell the child that if he or she is being hurt you will need to tell other people. The child may need to be reassured that you will only speak to those who need to know and that they will treat the matter confidentially.

LISTEN - Listen carefully to the child. Take what he or she says seriously as it is rare for a child to make entirely false allegations.

REASSURE - Reassure the child that he or she was right to tell and is not to blame for what happened, but do not promise confidentiality.

RECORD - As soon as possible after talking with the child, make a written record of what was said at the time, when and where the conversation took place and who was present. This must be accurate and not interpretation or assumption. Note any colloquial/slang words used by students and any language/behaviour inappropriate for the child's age – do not convert them into proper terms. Remember this may be used in any subsequent legal proceedings so note down too, how the child was behaving and the way in which they told you what was happening. This may indicate how the child was feeling.

For injuries in specific areas, record the location accurately – DO NOT take photographs or examine the child yourself.

SUPPORT - Get support for yourself. Listening to abused children can be very upsetting, and giving the child help may be difficult, if you are not given support yourself. Experience of working with children is not, in itself, preparation for the distress abuse can raise.

REMEMBER - It takes courage and determination for a child to tell an adult that they are being, or have been, abused. When they do tell someone, it is usually a person who they feel they can trust and whom they feel is reliable. For reasons of confidentiality, only those people who need to know about the abuse should be told, and conversations about the child should always be held in private.

If the concern involves the conduct of a member of staff or volunteer, a visitor, a governor, a trainee or another young person or child, the DSL/Headteacher must be informed asap; if the concern is in reaction to your Headteacher, you must speak to your Governor. If you feel you cannot speak with your Governors, you must use your whistleblowing procedure and contact Duty & Advice/LADO for advice and support. (Appendix 6)

NB It is not education staff's role to seek disclosures. Their role is to observe that something may be wrong, ask about it, listen, be available and try to make time to talk.

APPENDIX 3 - ALLEGATIONS ABOUT A MEMBER OF STAFF/VOLUNTEERS

1. Inappropriate behaviour by staff/volunteers could take the following forms:

- **Physical**
For example the intentional use of force as a punishment, slapping, use of objects to hit with, throwing objects or rough physical handling.
- **Emotional**
For example intimidation, belittling, scapegoating, sarcasm, lack of respect for children's rights, and attitudes that discriminate on the grounds of race, gender, disability or sexuality.
- **Sexual**
For example sexualised behaviour towards students, sexual harassment, sexual assault and rape.
- **Neglect**
For example failing to act to protect a child or children, failing to seek medical attention or failure to carry out an appropriate risk assessment.

2. If a child makes an allegation about a member of staff, governor, visitor or volunteer the Headteacher should be informed immediately. The Headteacher should carry out an urgent initial consideration in order to establish whether there is substance to the allegation. The Headteacher should not carry out the investigation him/herself or interview students.

3. The Headteacher must exercise, and be accountable for, their professional judgement on the action to be taken, as follows –

- If the actions of the member of staff, and the consequences of the actions, raise credible child protection concerns the Headteacher will notify the Local Authority Designated Officer (LADO) Team.
- The LADO Team will liaise with the Chair of Governors and advise about action to be taken, and may initiate internal referrals within children's social care to address the needs of children likely to have been affected.
- If the actions of the member of staff, and the consequences of the actions, do not raise credible child protection concerns, but do raise other issues in relation to the conduct of the member of staff or the student (s), these should be addressed through the school's own internal procedures.
- If the Headteacher decides that the allegation is without foundation and no further formal action is necessary, all those involved should be informed of this conclusion, and the reasons for the decision should be recorded on the child protection file.

4. Where an allegation has been made against the Headteacher, then the Chair of the Governing Body takes on the role of liaising with the LADO team in determining the appropriate way forward. For details of the procedure, please refer to the LSCB Website and refer to your Whistleblowing Procedures (Appendix.

APPENDIX 4 - GUIDELINES FOR AVOIDING ALLEGATIONS OF ABUSE: FOR ALL STAFF MEMBERS

Whilst they may in common law be regarded as acting in loco parentis, teachers and carers in school should remember that they are not able to take the place of parents in providing physical comfort. This is not to say that all physical contact is inappropriate, rather that the professional context demands circumspection and a sense of fitness for purpose.

Teachers of very young children of nursery and Key stage 1 age will naturally need to engage in more physical contact than teachers of older children. Comforting a distressed child who may just have started school will not be an unusual occurrence. Similarly, in the special school setting, some children may tend towards demanding physical attention. In such circumstances, the contact by the adult will be for re-assurance and may involve physical closeness (e.g. holding the child's hand or placing hands on the child's shoulders). Hugging and kissing would be inappropriate for other than the parent, even though the child may want to initiate it.

Administration of medicines and first aid requires careful codes of conduct and procedures. These should be laid down by local authority or health authority or in individual school guidelines and followed meticulously. As a rule of thumb, teachers should not administer medicines. If the child had an adverse reaction to a medicine given by a teacher, the teacher could be held liable and charged with negligence.

Administration of first aid should be undertaken by a qualified first aider. Where none is available, the minimum steps should be taken to ensure the child's safety and the emergency services should be called.

Teachers may sometimes be called upon to intervene physically if a child or children are in danger of injuring themselves or others - as in a fight in the school yard. It is important that in such circumstances the minimum possible reasonable force is used. Where possible another colleague should be called upon to assist, both to minimise the risk of injury to the teacher intervening and to act as witness that reasonable force and no more was used. After such an event a clear record of what took place should be made, including where possible statements from witnesses. The Headteacher should be informed.

One-to-one situations with pupils need to be carefully and consciously managed. Some teaching, as with peripatetic music staff, may often suggest one-to-one organisation. Where pupils can be paired for such lessons, it is preferable. Where this is not possible and in other situations of individual interviews with pupils, it is advisable to use a room with a window where others can see in or to leave the door open. If confidentiality makes this difficult, then another member of staff should be informed that the interview is taking place.

If a child becomes distressed, support and re-assurance should be offered through calming words rather than through physical contact. Teachers should not become involved with children's personal problems beyond listening and being sensitive to them in order to refer the child to the most appropriate source of help or counselling.

APPENDIX 5 - INDICATORS OF VULNERABILITY TO RADICALISATION

1. Radicalisation refers to the process by which a person comes to support terrorism and forms of extremism leading to terrorism.
2. Extremism is defined by the Government in the Prevent Strategy as:

Vocal or active opposition to fundamental British values, including democracy, the rule of law, individual liberty and mutual respect and tolerance of different faiths and beliefs. We also include in our definition of extremism calls for the death of members of our armed forces, whether in this country or overseas.

3. Extremism is defined by the Crown Prosecution Service as:

The demonstration of unacceptable behaviour by using any means or medium to express views which:

- Encourage, justify or glorify terrorist violence in furtherance of particular beliefs;
 - Seek to provoke others to terrorist acts;
 - Encourage other serious criminal activity or seek to provoke others to serious criminal acts; or
 - Foster hatred which might lead to inter-community violence in the UK.
4. There is no such thing as a “typical extremist”: those who become involved in extremist actions come from a range of backgrounds and experiences, and most individuals, even those who hold radical views, do not become involved in violent extremist activity.
 5. Students may become susceptible to radicalisation through a range of social, personal and environmental factors - it is known that violent extremists exploit vulnerabilities in individuals to drive a wedge between them and their families and communities. It is vital that school staff are able to recognise those vulnerabilities.
 6. Indicators of vulnerability include:
 - Identity Crisis – the student is distanced from their cultural / religious heritage and experiences discomfort about their place in society;
 - Personal Crisis – the student may be experiencing family tensions; a sense of isolation; and low self-esteem; they may have dissociated from their existing friendship group and become involved with a new and different group of friends; they may be searching for answers to questions about identity, faith and belonging;
 - Personal Circumstances – migration; local community tensions; and events affecting the student’s country or region of origin may contribute to a sense of grievance that is triggered by personal experience of racism or discrimination or aspects of Government policy;
 - Unmet Aspirations – the student may have perceptions of injustice; a feeling of failure; rejection of civic life;
 - Experiences of Criminality – which may include involvement with criminal groups, imprisonment, and poor resettlement/reintegration; and
 - Special Educational Need – students may experience difficulties with social interaction, empathy with others, understanding the consequences of their actions and awareness of the motivations of others.
 7. However, this list is not exhaustive, nor does it mean that all young people experiencing the above are at risk of radicalisation for the purposes of violent extremism.
 8. More critical risk factors could include:
 - Being in contact with extremist recruiters;
 - Accessing violent extremist websites, especially those with a social networking element;

- Possessing or accessing violent extremist literature;
- Using extremist narratives and a global ideology to explain personal disadvantage;
- Justifying the use of violence to solve societal issues; and
- Joining or seeking to join extremist organisations; and
- Significant changes to appearance and/or behaviour;
- Experiencing a high level of social isolation resulting in issues of identity crisis and/or personal crisis

Evington Valley Primary School Whistleblowing Policy

Reporting illegal or improper conduct

(disclosures under the Public Interest Disclosures Act 1998)

or

concerns about safeguarding children & young people

1 Introduction

This policy applies to all employees and governors. Other individuals performing functions in relation to the organisation, such as agency workers and contractors, should have a copy of this also or have least read a copy.

It is important to Evington Valley that any fraud, misconduct or wrongdoing by employees or governors of the school is reported and properly dealt with. The Governing Body will, therefore, respond to all individuals who raise any genuine concerns that they may have about the conduct of others in the school, **which are in the public interest**. This policy sets out the way in which individuals may raise any concerns that they have and how those concerns will be dealt with.

1.1 Evington Valley expects the highest standards of conduct from all employees and governors and will treat seriously any concern raised about illegal or improper conduct.

1.2 Any individual covered by this policy will be expected, through agreed procedures and without fear of recrimination, to bring to the attention of the Headteacher (or the Chair of Governors if the concerns relate to the Headteacher) any serious impropriety or breach of procedure.

1.3 Employees who do not follow the steps identified in this procedure or other agreed internal procedures, and take their concerns to other outside sources (e.g. the press), may be subject to a formal disciplinary investigation.

2 Background

The law provides protection for employees who raise legitimate concerns about specified matters. These are called 'qualifying disclosures'. A qualifying disclosure is one made in the public interest by the employee who has a reasonable belief that:

- A criminal offence
- A miscarriage of justice
- An act creating risk to health and safety
- An act causing damage to the environment
- Corruptly receiving any gift or advantage, thus failing to comply with the Bribery Act 2010
- Allowing private interests to override the interests of the school
- A breach of any legal obligation; or
- concealment of any of the above

is being, has been, or is likely to be, committed. It is not necessary for the employee to have proof that such an act is being, has been, or is likely to be committed, - a reasonable belief is sufficient. The employee has no responsibility for investigating the matter; it is the school's responsibility to ensure that an investigation takes place.

2.1 Where the concerns are about **safeguarding children or young people**, the school's Designated Safeguarding Lead for Child Protection should be notified (See section 7.2).

2.2 It is a procedure in which the Headteacher or Chair of Governors will be expected to act swiftly and constructively in the investigation of any concerns in accordance with the school's disciplinary procedure.

2.3 Concerns about a colleague's professional capability should **not** be dealt with using this procedure (but see section 7 below).

3 When should it be used?

This procedure is for disclosures about matters other than a breach of an employee's own contract of employment. If an employee is concerned that his/her own contract has been, or is likely to be, broken he/she should use the school's Grievance procedures.

Where a disclosure is merely an expression of opinion that fails to show that a legal obligation has been or is likely to be breached, it **cannot** amount to a protected or qualifying disclosure for the purposes of the whistle blowing legislation

3.1 So this procedure is not designed to replace or be used as an alternative to the grievance procedure, which should be used where an employee is only aggrieved about his/her own situation. Nor should this policy apply where the employee simply disagrees with the way the school is run.

3.2 Employees must have reasonable grounds for believing the information they have is accurate and not just idle gossip or rumour.

3.3 An employee who makes such a protected disclosure has the right not to be dismissed, subject to any other detriment, or victimised, because he/she has made a disclosure, provided it has not been made maliciously. Any employee who uses this procedure will not be penalised for doing so. The employer will not tolerate harassment and/or victimisation of any employee raising concerns.

3.4 An employee who is not sure whether the conduct he/she is concerned about does constitute illegal or improper conduct or is unsure about how to proceed may contact the Leicester City Council HR Department – 0116 454 4310 or email: hrpolicy@leicester.gov.uk or their Professional Association/Trade Union.

3.5 Financial regulations require that any suspicion of fraud, corruption or other financial irregularity is reported to Internal Audit for possible investigation. Normally an employee must first report any suspicion of such an irregularity to the Headteacher or Chair of Governors (but see 5), who will in turn report it to Internal Audit. Similar principles apply to Academies where the funding agency must be informed.

4. Principles

4.1 Any matter raised under this procedure will be investigated thoroughly, promptly and confidentially, and the outcome of the investigation reported back to the employee who raised the issue.

4.2 No employee will be victimised for raising a matter under this procedure. This means that the continued employment and opportunities for future promotion or training of the employee will not be prejudiced because he/she has raised a legitimate concern.

4.3 Victimisation of a worker for raising a qualified disclosure will be a disciplinary offence.

4.4 If misconduct is discovered as a result of any investigation under this procedure the matter will be considered under the disciplinary procedure, in addition to any appropriate external measures.

4.5 Maliciously making a false allegation is a disciplinary offence.

4.6 An instruction to cover up wrongdoing is in itself a disciplinary offence. If told not to raise or pursue any concern, even by a person in authority, employees should not agree to remain silent.

5. Procedure

5.1 In the first instance, unless the employee reasonably believes his/her Headteacher to be involved in the wrongdoing, any concerns should be raised with the employee's Headteacher. If he/she believes the Headteacher to be involved, then the employee should proceed straight to the Governing Body or point 5.3 below.

5.2 The Headteacher/Chair of Governors will arrange an investigation into the matter (either by investigating the matter himself/herself or immediately passing the issue to someone in a senior position). The investigation may involve the employee and others involved giving written statements. Any investigation will be carried out in accordance with the principles set out above. The employee's statement will be taken into account and he/she will be asked to comment on any additional evidence obtained.

Employees who want to use the procedure but feel uneasy about it may wish to consult their Professional Association/Trade Union initially and bring a colleague or Professional Association/Trade Union Representative along to any discussions, so long as the third party is not involved in the issue.

Where anonymity is requested efforts will be made to meet the request where appropriate but that might not always be possible. The earlier and more open the expression of concern the easier it will be to take appropriate action.

5.3 The Headteacher (or the person who carried out the investigation) will then report to the Chair of Governors/Governing Body who will take the necessary action, including reporting the matter to any appropriate department or regulatory agency. If disciplinary action is required this will be taken forward by the Headteacher/Chair of Governors/Governing body in consultation with the School's HR Advisory Team. On conclusion of any investigation, the employee will be told the outcome of the investigation and what the next steps will be. If no action is to be taken, the reason for this will be explained.

If the employee is concerned that his/her Headteacher is involved in the wrongdoing, has failed to make a proper investigation or has failed to report the outcome of the investigation, he/she should inform the Leicester City Council, HR Department. Employees who feel unable to follow this route, for whatever reason, have the option of contacting one of the following:

- HM Revenue and Customs
- The Financial Services Authority
- The Office of Fair Trading
- The Health and Safety Executive
- The Environment Agency
- The Director of Public Prosecutions
- The Serious Fraud Office
- The Education Funding Agency
- The Department for Education
- The National College for Teaching and Leadership

6 What should be done if an issue is raised with a member of staff?

6.1 If a member of staff, other than the Headteacher, is approached by a colleague on a matter of concern as defined in this document, he/she is advised to take the matter to the Headteacher as above point 5.

7 Safeguarding Children and Young People

7.1 All employees have a duty to report concerns about the safety and welfare of pupils/students.

7.2 Concerns about any of the following should be reported to the Designated Safeguarding Lead for Child Protection (DSL):

- physical abuse of a pupil/student
- sexual abuse of a pupil/student
- emotional abuse of a pupil/student
- neglect of a pupil/student
- issues relating to Female Genital Mutilation, Child Missing from Education, Child Sexual Exploitation & Radicalisation
- an intimate or improper relationship between an adult and a pupil/student
- improper behaviour or conduct of staff towards children

Evington Valley's DSL is Jill Griffin (Headteacher)

7.3 The reason for the concern may be the actions of a colleague (including a more senior colleague), a Governor, another pupil/student or someone outside the school. Whatever the reason, concerns must be reported. Failure to report a Child Protection related allegation will be in itself, a disciplinary matter.

Law Relating To This Document

Employment Rights Act 1996

Public Interest Disclosures Act 1998 (Whistleblowing)

Human Rights Act 1998 (Duty of care)

The legislation protecting individuals who makes a protected disclosure applies not only to employees, but also to any person who undertakes to do or perform personally (or otherwise) any work or service for the employer, regardless of the nature of the contractual relationship between them.

A Whistleblowing Policy should establish the procedure for an employee to follow if he/she has a genuine concern about a colleague's conduct or the organisation's practices. The Whistleblowing Policy should make clear what sort of allegations will count as a protected disclosure and should allow for the employee to raise these concerns with a nominated person and set out the steps that the employer will take in response.

A qualifying disclosure means any disclosure of information that in the reasonable belief of the worker is made in the public interest. The requirement that a whistleblower make a qualifying disclosure 'in good faith' has been removed. Therefore, while the employer can seek a declaration from the whistleblower that he or she is not knowingly making a false allegations, disciplinary action is likely to be appropriate only where there is clear evidence that the employee has misused the whistle blowing procedure. A consequence of the requirement that a disclosure be made in the public interest is that an employee will generally be precluded from being able to 'blow the whistle' about breaches of his or her employment contract.

Section 43J of the Employment Rights Act 1996 provides that a Settlement Agreement made between an employee and employer cannot prevent future protected disclosures.

Any confidentiality obligations in contracts of employment that would prevent an employee making a protected disclosure will be void.

8 **Contacts**

Leicester City Council HR Department

E mail address

Tel: 0116 454 4310

Email: hrpolicy@leicester.gov.uk

Leicester City Council, Safeguarding Children's Unit

Tel: 0116 454 2440

Duty and Advice

0116 454 1004

LADO – Local Authority Designated Lead

0116 454 2440

Head Teacher of School

Jill Griffin

Tel: 0116 2736971

Governor of School

Hameeda Sidat

Tel: 0116 2736971

DSL's in School:

Yasmin Sarang

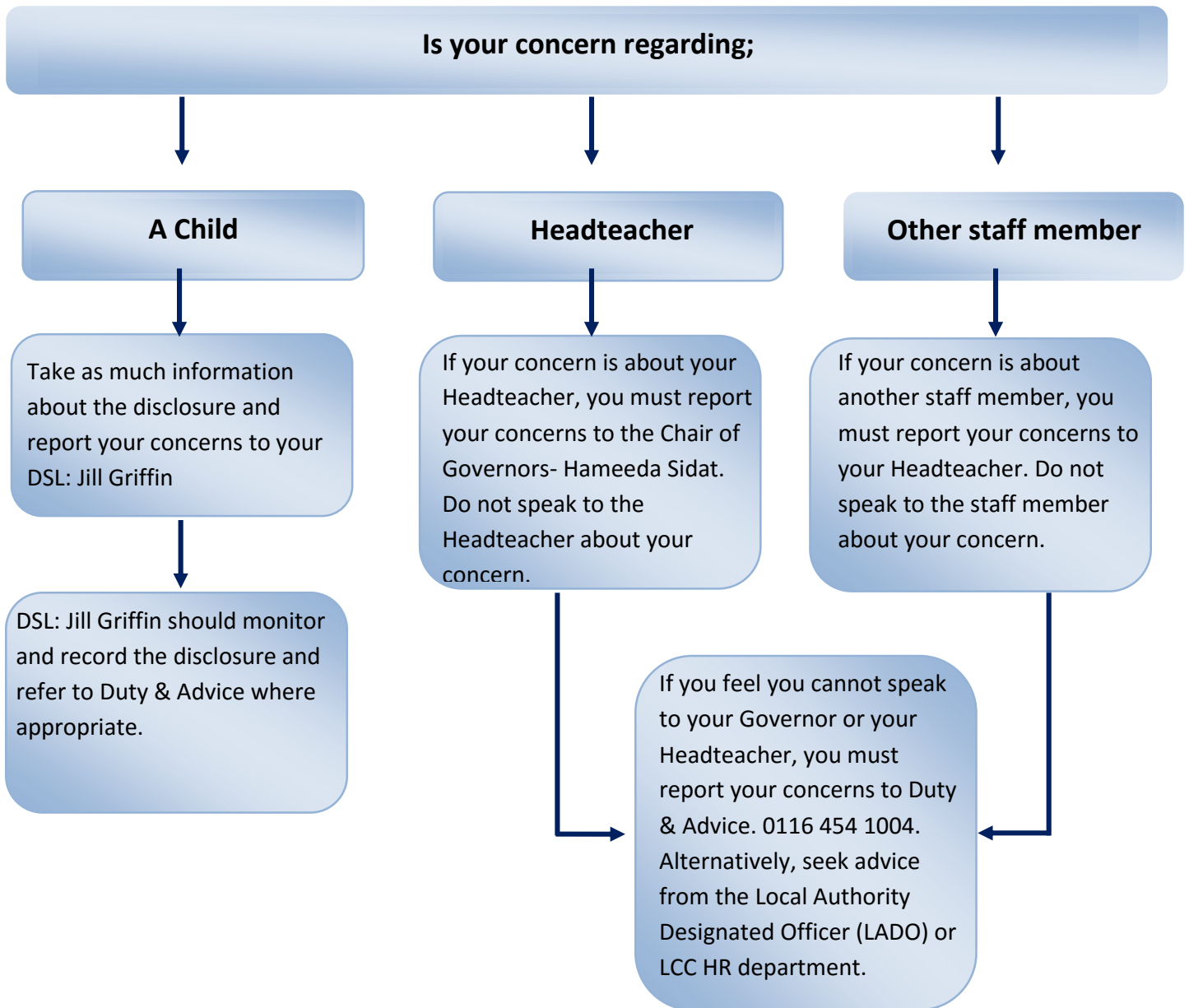
Adrian Manning

Lucy Ireland

Tel: 0116 2736971

Public Interest Disclosure Act (whistleblowing) protects workers in private, public and voluntary organisations, if in the public interest they blow the whistle on wrongdoing.

If you want to raise a concern in your school/college and wish to whistle blow for wrongdoing, in the first instance, use the following diagram for guidance;



Contact Numbers both internal and external to School:

Headteacher

Jill Griffin 0116 2736971

Chair of Governors

Hameeda Sidat 0116 2736971

Designate Safeguarding Lead (s)

Jill Griffin 0116 2736971

Adrian Manning 0116 2736971

Lucy Ireland 0116 2736971

Yasmin Sarang 0116 2736971

Safeguarding Children's Unit

0116 454 2440

LCC Duty & Advice (includes out of hours)

0116 454 1004

Safeguarding in Education

0116 454 2440

Safeguardingineducation@leicester.gov.uk

Local Authority Designated Officer (LADO)

0116 454 2440

SAFE Project (DV Support)

0300 123 0918

Forced Marriage Unit

Telephone: +44 (0) 20 7008 0151

Email: fmu@fco.gov.uk

Email for outreach work: fmuoutreach@fco.gov.uk

Prevent Coordinator Leicester - Will Baldet

07403 727727

| | |
|------------------------|--|
| Version Control | 1.3 |
| Author: | Julie Chapaneri, Safeguarding in Education Officer |
| Date: | August 2017 |
| Revision: | August 2018 |